

Port Marine Notice

Port of: **Jebel Dhanna Ruwais**

No.JDR/MN/018/2024

Date: 02.04.2024

To : **All Shipping
Shipping Agents
Port Users
Port Operators**

Type of Change: **Permanent**

Subject : RUWAIS CHANNEL DREDGED TO 17.0 METER DEPTH, BUOYS ARE RE-DEPLOYED TO THEIR AS-BUILT POSITIONS, AND THE CHANNEL IS OPEN FOR NAVIGATION

Dredging operation within Jebel Dhanna Ruwais (JDR) Port limits has been completed and previous marine notice (JDR-MN-004/2024) related to it stands cancelled. The minimum depths maintained within RUWAIS CHANNEL is 17.0 meters and is declared open for navigation. EAST GHASHA channel shall remain open for vessels drawing maximum sailing draft of 10.0 meters.

Aids to Navigation (Buoys) for both Yas and Ruwais Channels have been re-deployed to their as-built positions (see appended table 1).

The No-Go area which has been established for the project (with previous marine notice No. JDR/MN/19/2023) has been cancelled, see Figure 2.

Traffic movements are to be followed as per JDR Port Regulations and reporting to VTIS on Ch 21.

Following General Direction of traffic to be adhered:

**YAS CHANNEL – FOR INBOUND TRAFFIC
RUWAIS CHANNEL-FOR OUTBOUND TRAFFIC
EAST GHASHA CHANNEL-FOR IN/OUTBOUND TRAFFIC**

Caution: Nil

Contact Ruwais VTIS on Ch.16 and 21 for further information.

Any clarification related to this Port Marine Notice, may be directed to the Harbor Master using Contact us form on PPA website <https://ppa.adnoc.ae/en/contact-us>

Harbour Master

Port of : **Jebel Dhanna Ruwais**

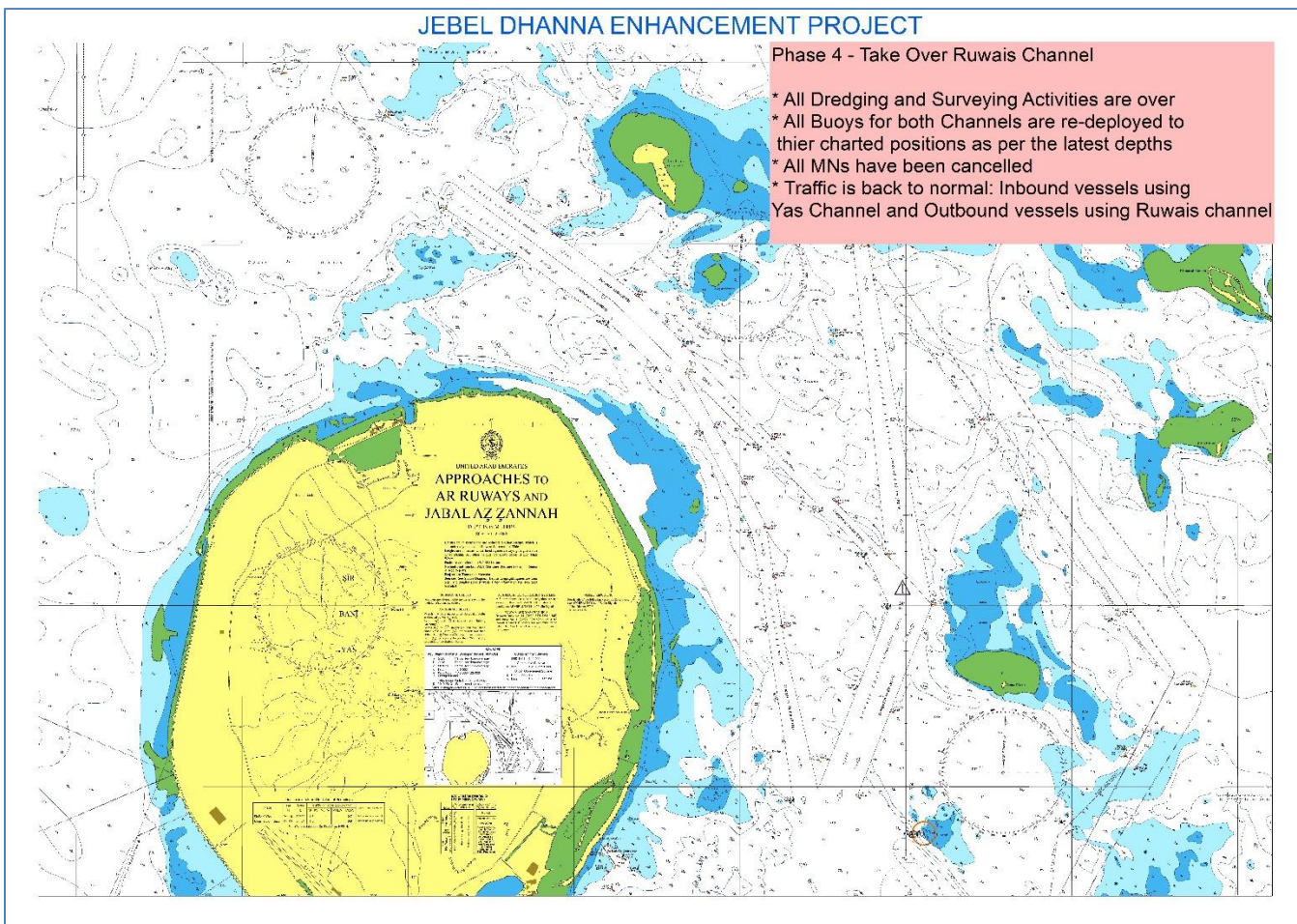


Figure 1. Ruwais Channel opens for navigation.

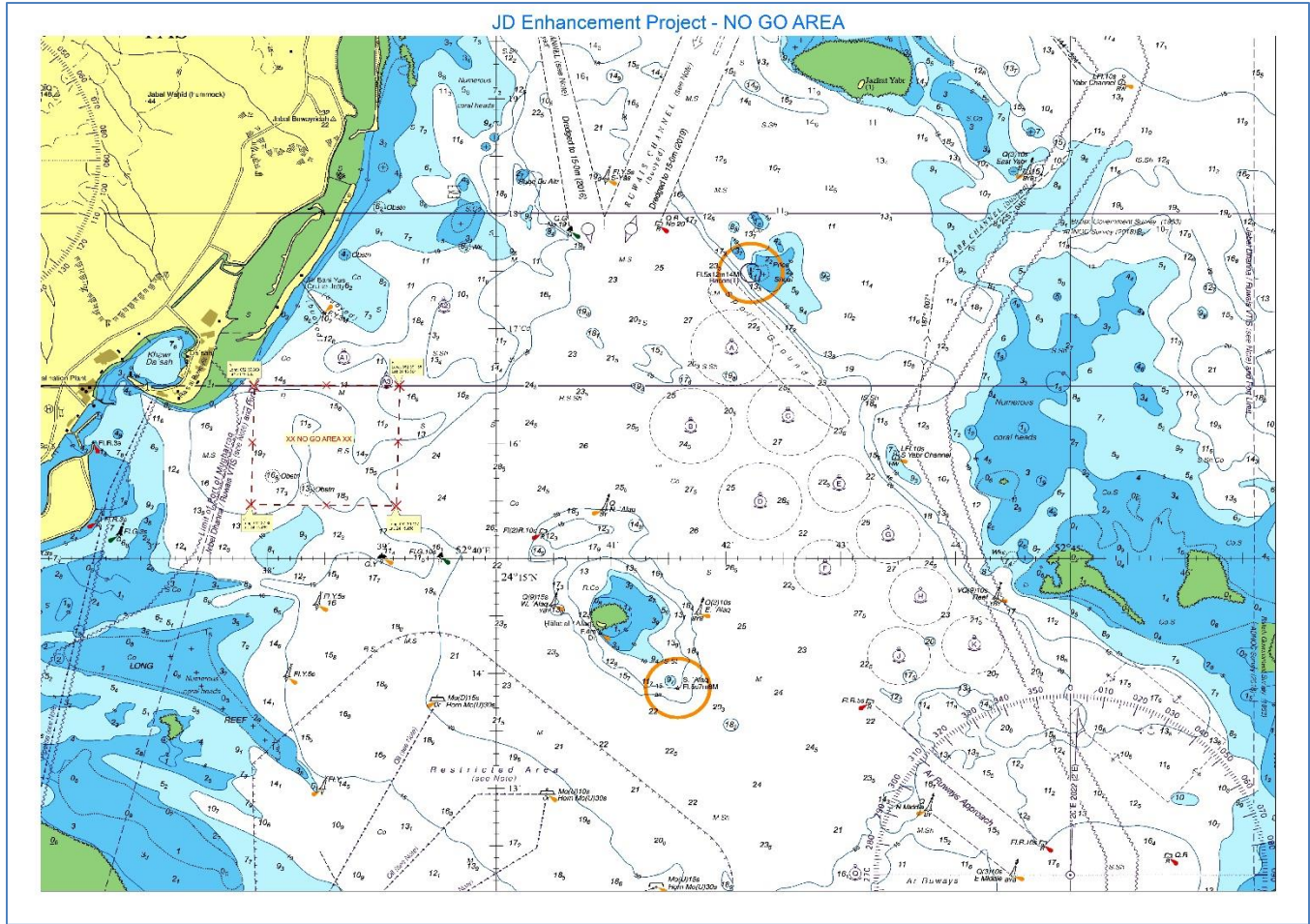


Figure 2. No-Go area

Table 1. Ruwais and Yas Channels Buoys - As-Built positions

S. No.	Buoy	Latitude	Longitude	Remark
1	No 1	24° 24.4002' N	52° 36.4127' E	As Built Position
2	No 2	24° 24.4854' N	52° 37.1944' E	As Built Position
3	No 3	24° 23.8761' N	52° 37.3021' E	As Built Position
4	No 4	24° 24.1193' N	52° 37.7395' E	As Built Position
5	No 5	24° 23.1324' N	52° 38.4086' E	As Built Position
6	No 6	24° 23.4438' N	52° 38.7450' E	As Built Position
7	No 7	24° 22.6209' N	52° 38.9964' E	As Built Position
8	No 8	24° 22.8880' N	52° 39.3164' E	As Built Position
9	No 9	24° 21.7501' N	52° 40.2502' E	As Built Position
10	No 10	24° 21.8585' N	52° 40.3784' E	As Built Position
11	No 11	24° 21.0542' N	52° 41.0021' E	As Built Position
12	No 12	24° 21.1677' N	52° 41.1308' E	As Built Position
13	No 13	24° 20.5524' N	52° 41.5283' E	As Built Position
14	No 14	24° 20.5701' N	52° 41.7600' E	As Built Position
15	No 15	24° 19.9911' N	52° 41.8028' E	As Built Position
16	No 16	24° 20.0092' N	52° 42.3121' E	As Built Position
17	No 17	24° 19.0775' N	52° 41.4157' E	As Built Position
18	No 18	24° 18.8448' N	52° 41.8172' E	As Built Position
19	No 19	24° 17.8517' N	52° 40.6424' E	As Built Position
20	No 20	24° 17.8964' N	52° 41.4134' E	As Built Position
21	N-Yas	24° 22.5606' N	52° 39.3570' E	As Built Position
22	S-Yas	24° 18.3000' N	52° 40.9400' E	As Built Position
23	Yas 1	24° 21.9146' N	52° 39.5350' E	As Built Position
24	Yas 2	24° 21.9906' N	52° 39.6913' E	As Built Position
25	Yas 2-A	24° 21.3663' N	52° 40.0435' E	As Built Position
26	Yas 3	24° 20.8079' N	52° 40.1440' E	As Built Position
27	Yas 4	24° 20.8869' N	52° 40.3115' E	As Built Position
28	Yas 4-A	24° 20.1971' N	52° 40.4306' E	As Built Position
29	Yas 5	24° 19.4906' N	52° 40.3726' E	As Built Position
30	Yas 6	24° 19.5072' N	52° 40.5496' E	As Built Position