

## Port Marine Notice

Port of: **Jebel Dhanna Ruwais**

**No. JDR/MN/048/2024**

**Date: 30.11.2024**

To : **All Shipping  
Shipping Agents  
Port Users  
Port Operators**

Type of Change: **Temporary**

**Subject : RLNG-PJ Dredging Operations**

Dear Masters and Mariners,

To all vessel`s operating in the vicinity of the Ruwais PPA area or navigating through the RLNG - PJ area, there is a dredging channel operation located at NW side of a Ruwais plants, according to appended chart.

Dredging operations will be undertaken in different phases as indicated in appended charts. The involved dredging crafts will exhibit day shapes and lights as required by Collision Regulations. Whilst operating, the involved crafts will maintain a listening watch on VHF Channel 21/09. Dredging operation will be undertaken 24x7.

**The Main activity of operation will consist of following:**

- Dredging of RLNG-PJ Channel, as per appended chart
- Disposal of dredged material to dumping sites, using sailing routes as per appended charts.

**Crafts involved in dredging operations are as follows:**

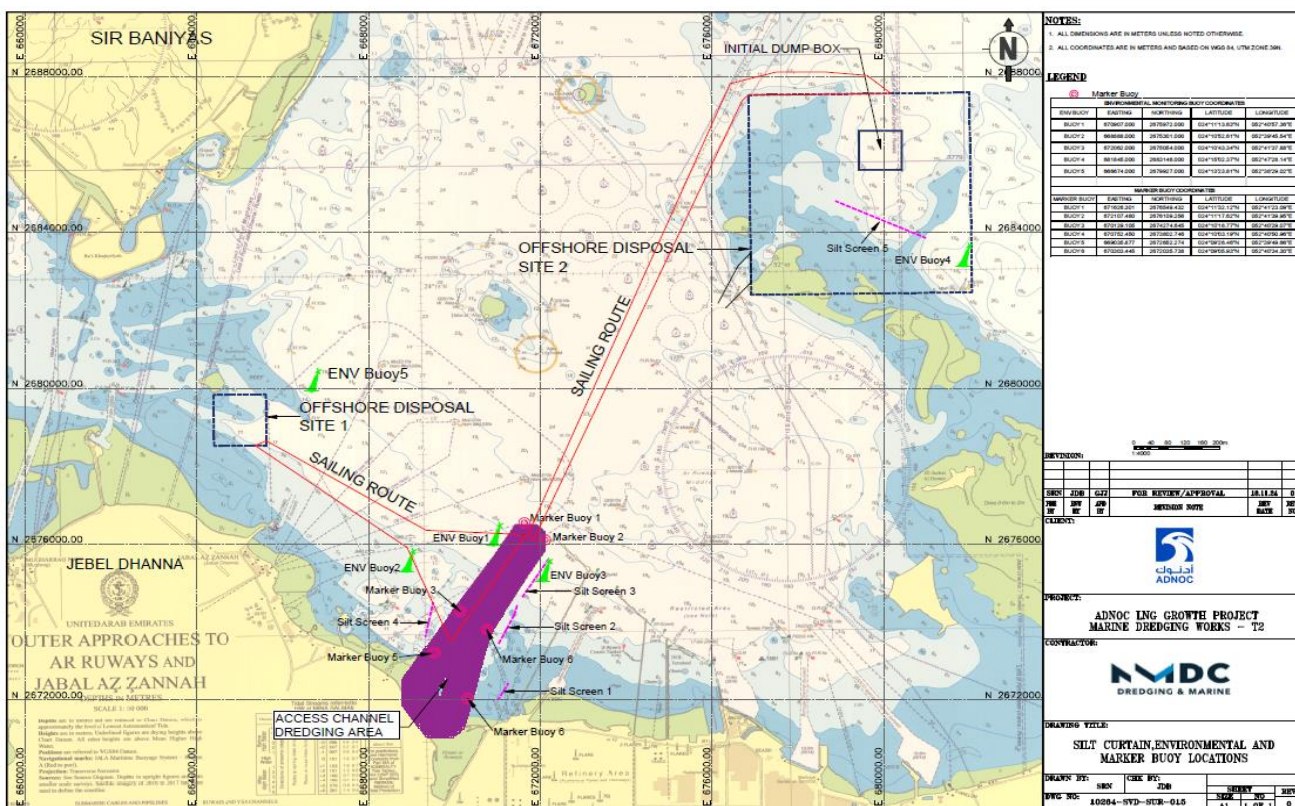
**-TSHD GHASHA / CSD ATHENA / MULTICAT CRONUS / Tug T 7 & DEGALAH / MARBAN-1, SURVEY 8, DYNAMIC 11/ SAND CARRIER 101,102,103,104,105,106**

**Caution :** Mariners are advised to exercise extra caution due to dredging works and navigate at safe speed while transiting in area near vicinity:

1. All vessels/crafts to proceed with safe speed and navigate with extra caution, especially during dark hours.
2. Keep a sharp lookout for crossing traffic within navigating channels.
3. Maintain constant listening watch on Ch 21 and 09 .
4. All movements should be coordinated with Port Control/VTIS
- 5.All vessel masters are required to plot these coordinates showing below drawings/coordinates on their BA charts and maintain 500m. a safe distance away and proceed with caution while approaching near to dredging area location.

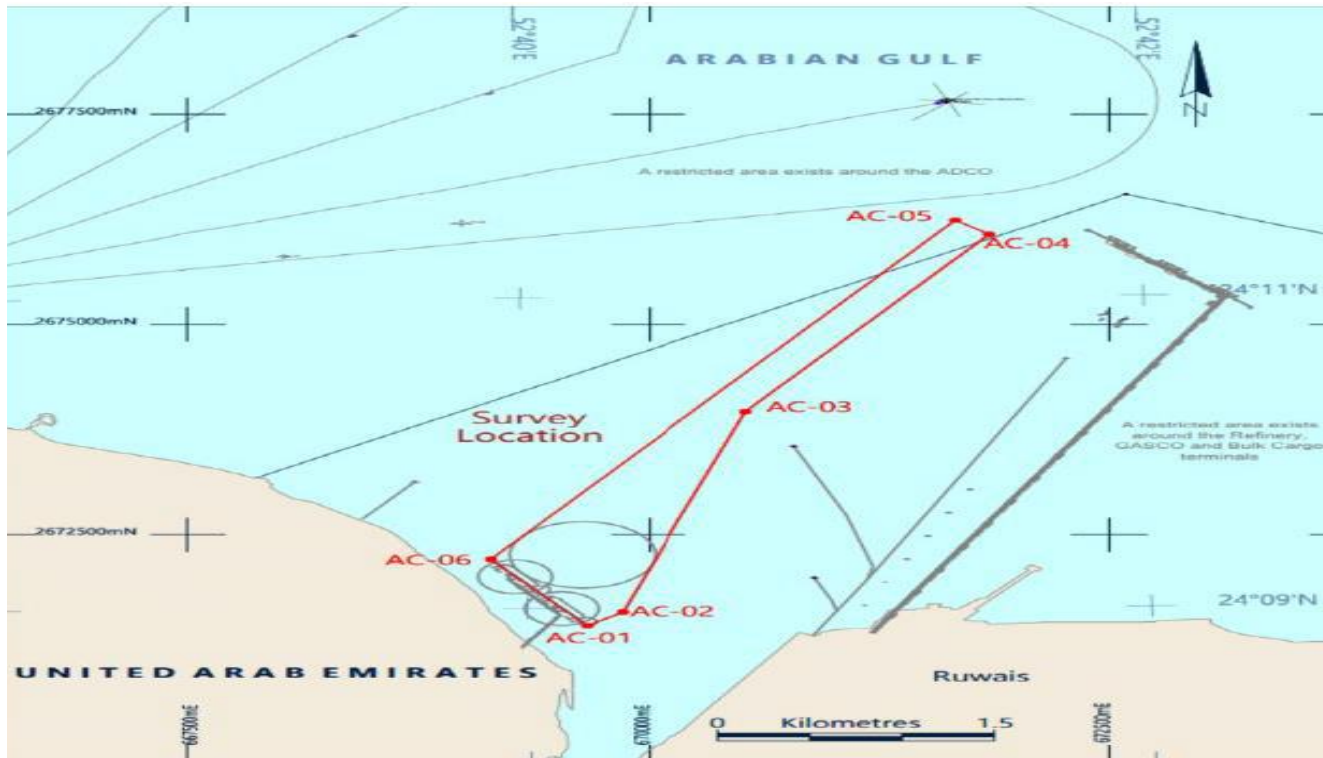
Any clarification related to this Port Marine Notice, may be directed to the Harbor Master using Contact us form on PPA website <https://ppa.adnoc.ae/en/contact-us>

Harbour Master  
Port of :Jebel Dhanna Ruwais



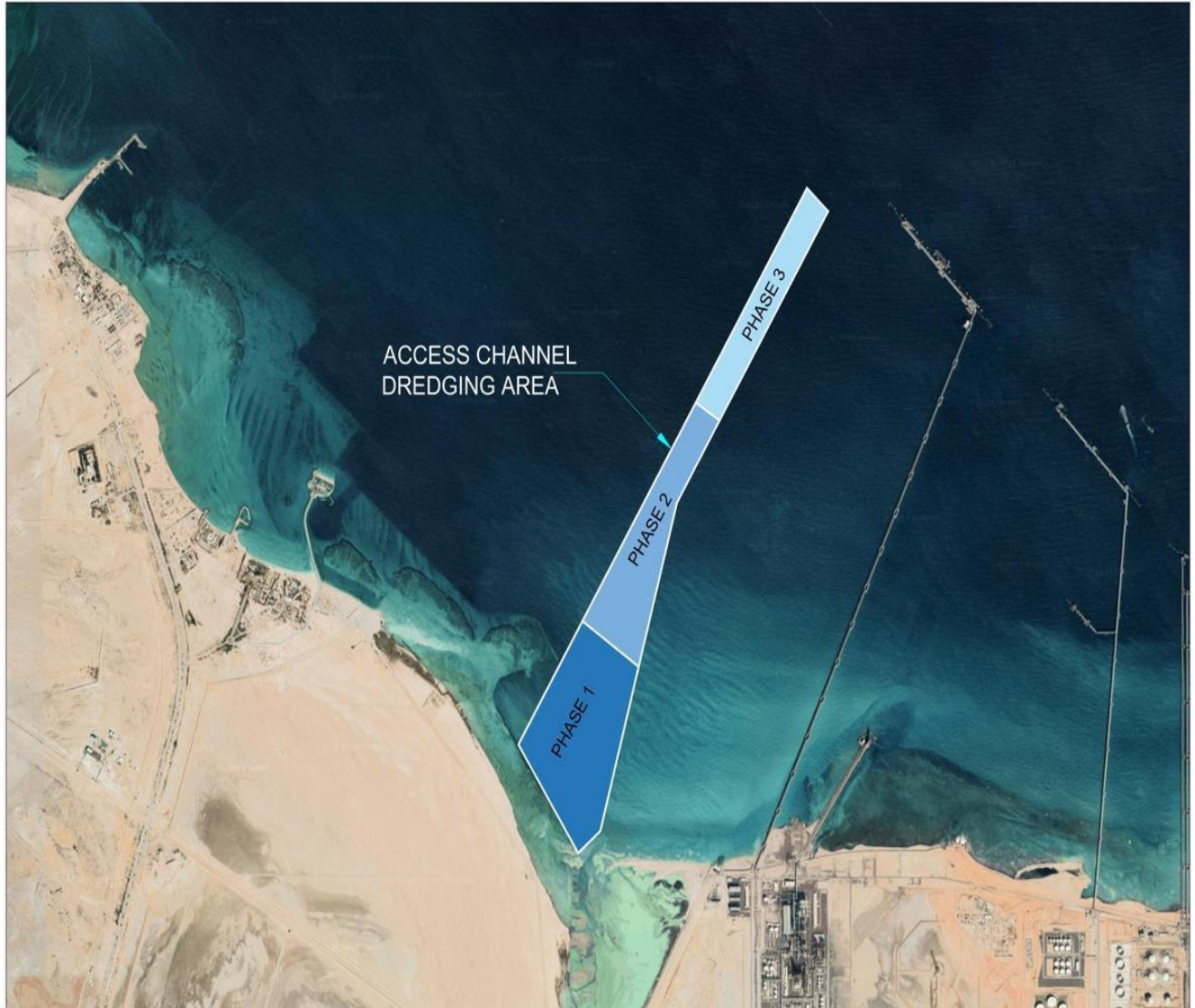
Reference No.	EASTING	NORTHING	LATITUDE	LONGITUDE
AC-01	669664.503	2671419.425	024°08'46.151"N	052°40'11.408"E
AC-02	669857.881	2671577.870	024°08'51.226"N	052°40'18.325"E
AC-03	670529.679	2673963.033	024°10'08.486"N	052°40'43.133"E
AC-04	671849.892	2676074.117	024°11'16.582"N	052°41'30.806"E
AC-05	671666.250	2676242.532	024°11'22.128"N	052°41'24.372"E
AC-06	669142.155	2672206.383	024°09'11.931"N	052°39'53.238"E

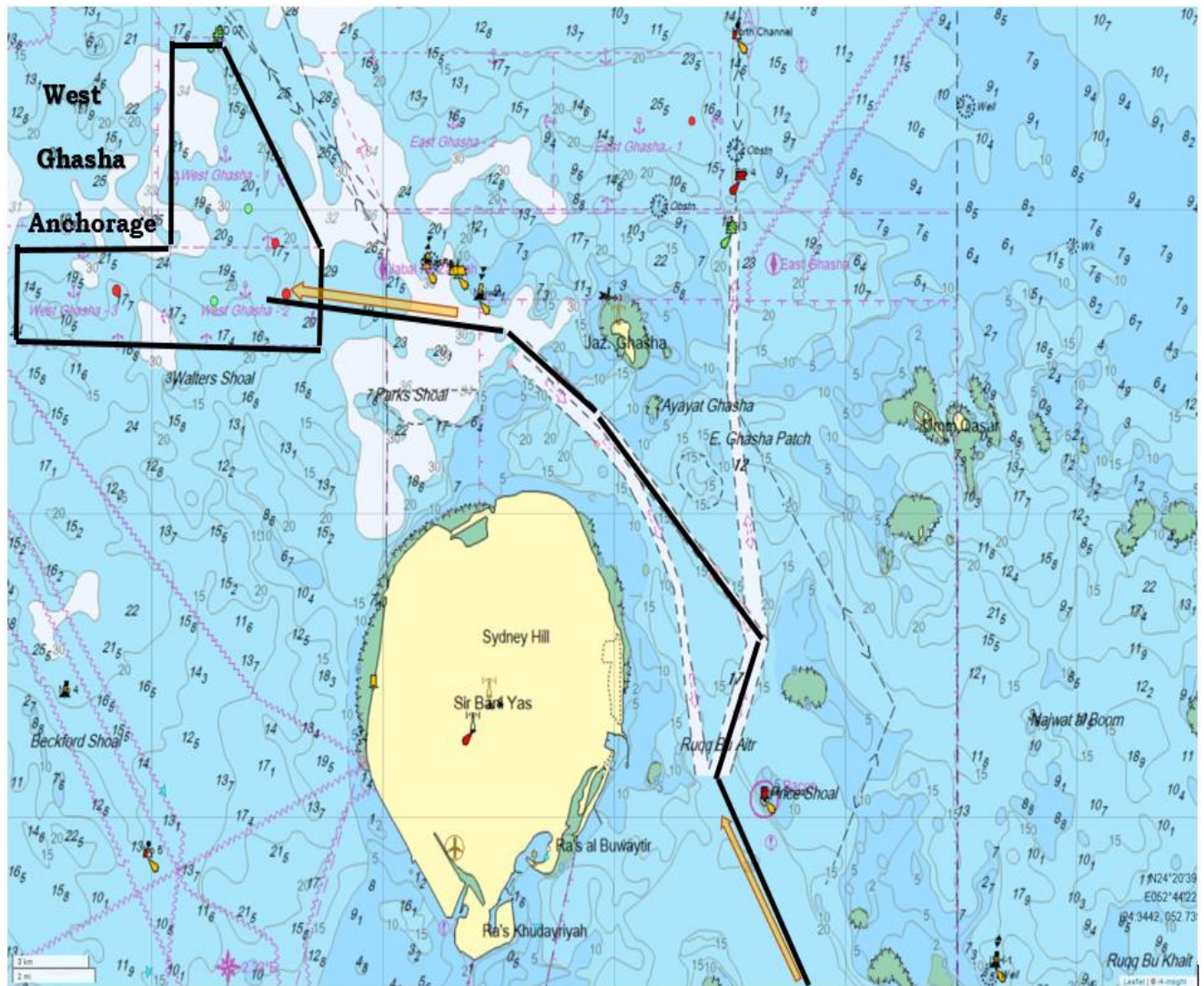
Table 1 \*All Coordinates are based on WGS 84\*



Reference No.	EASTING	NORTHING	LATITUDE	LONGITUDE
AC-01	669664.503	2671419.425	024°08'46.151"N	052°40'11.408"E
AC-02	669857.881	2671577.870	024°08'51.226"N	052°40'18.325"E
AC-03	670529.679	2673963.033	024°10'08.486"N	052°40'43.133"E
AC-04	671849.892	2676074.117	024°11'16.582"N	052°41'30.806"E
AC-05	671666.250	2676242.532	024°11'22.128"N	052°41'24.372"E
AC-06	669142.155	2672206.383	024°09'11.931"N	052°39'53.238"E

Table 2 \*All Coordinates are based on WGS 84\*



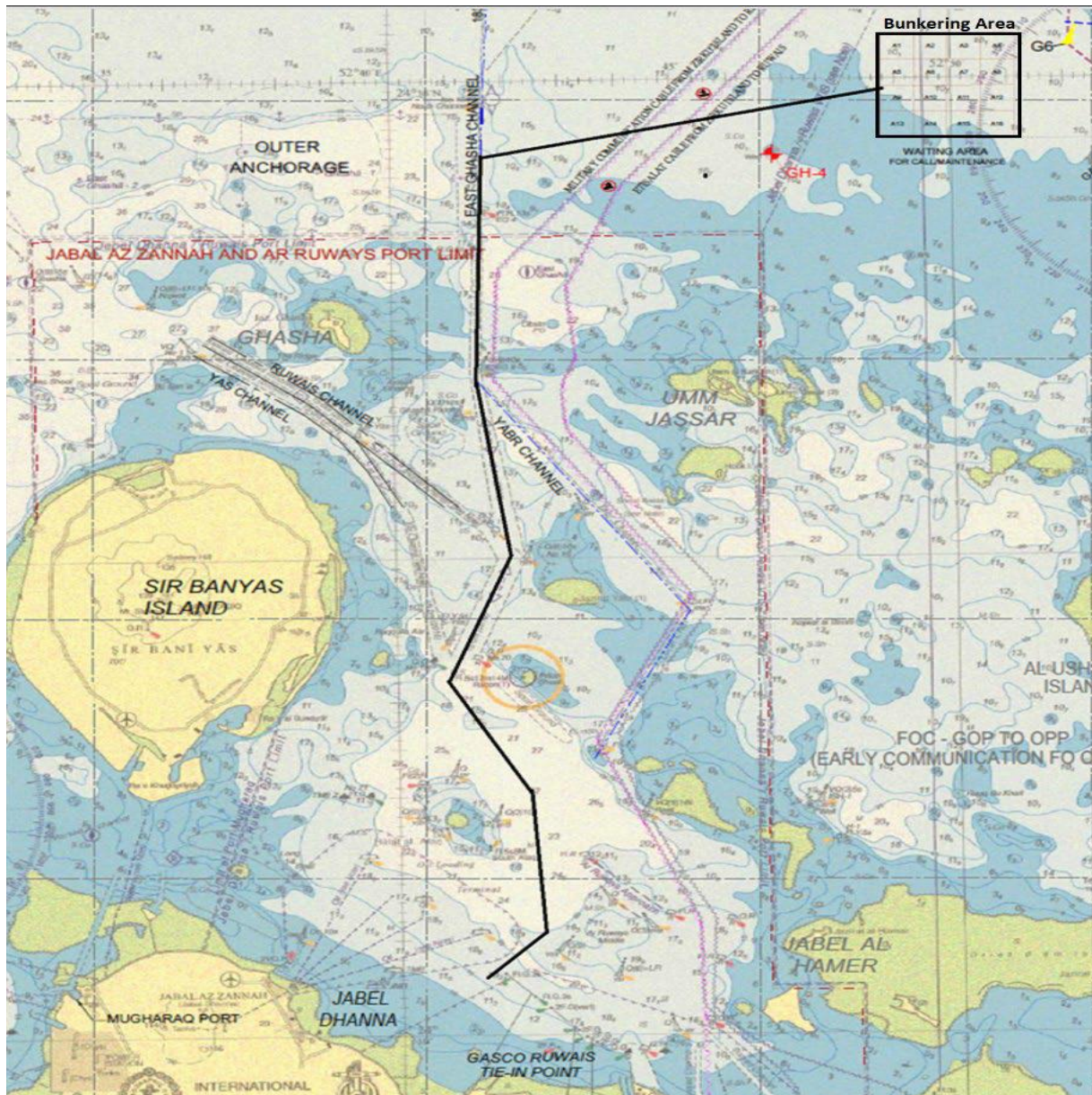


W Ghasha Anchorage	24.4159	052.5363	24° 24 38.27N	052° 32 10.80E
W Ghasha Anchorage	24.4106	052.4199	24° 24 38.27N	052° 25 11.66E
W Ghasha Anchorage	24.4359	052.4034	24° 26 09.39N	052 ° 24 12.31E
W Ghasha Anchorage	24.4366	052.4779	24° 26 09.39N	052° 28 40.61E
W Ghasha Anchorage	24.4366	052.5343	24° 26 09.39N	052° 32 10.80E
W Ghasha Anchorage	24.4922	052.4979	24° 29 30.81N	052° 29 52.32E
W Ghasha Anchorage	24.4922	052.4779	24° 29 30.81N	052° 28 40.61E

Table 3 - \*Coordinates are based on WGS 84\*

**Bunkering of TSHD and CSD dredgers will be performed at outside of PPA area bounded coordinates;**

- 24° 30'.58N 052° 48'.45E NW corner
- 24° 30'.58N 052° 51'.07E NE corner
- 24° 28'.48N 052° 48'.44E SW corner
- 24° 28'.48N 052° 51'.06E SE corner

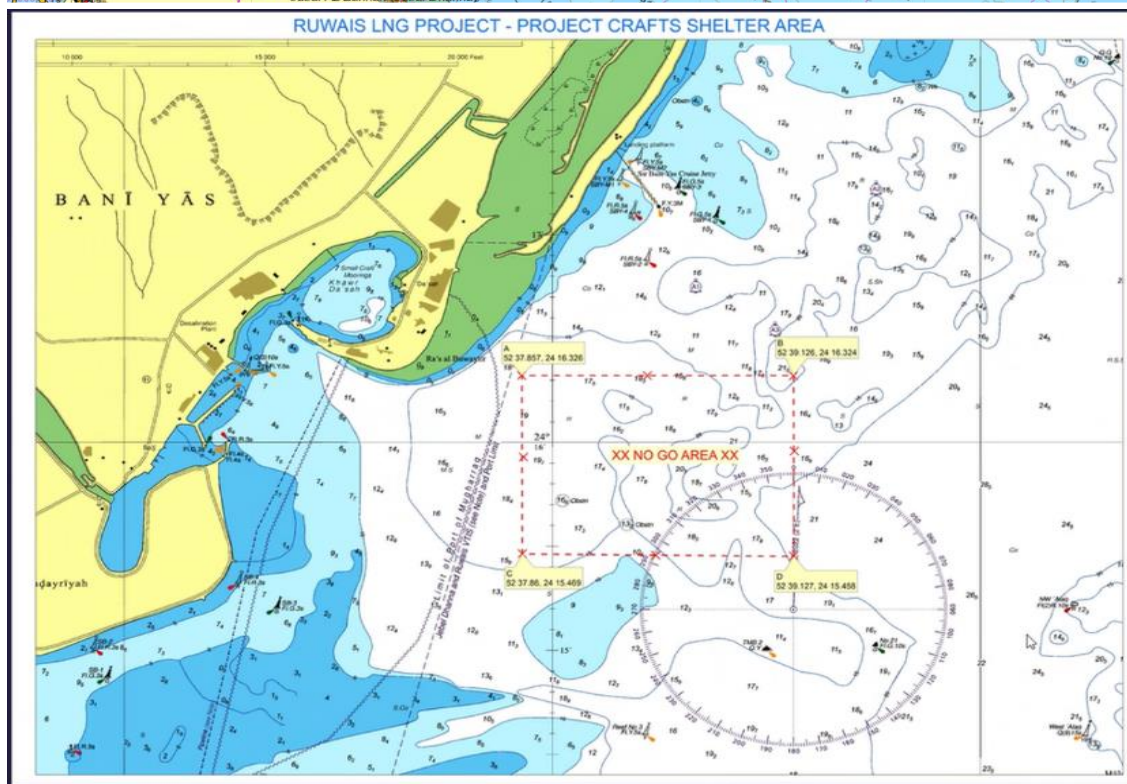
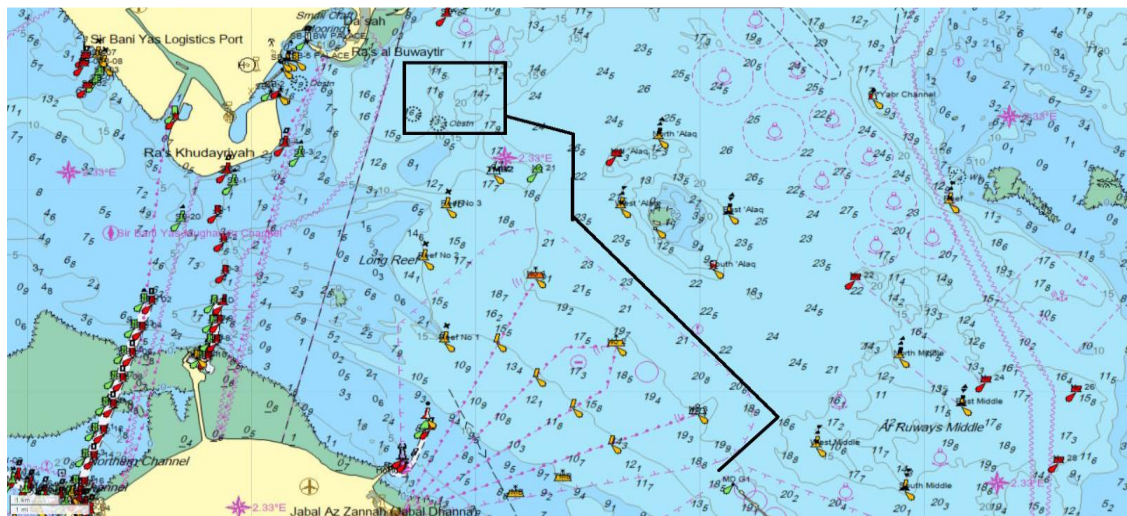


***Bunkering & Major Repair Location***

### Shelter Area Coordinates

A. Lat. 24° 16.326 N, Long. 052° 37.857 E // B. Lat. 24° 16.324 N, Long. 052° 39.126 E

C. Lat. 24° 15.469 N, Long. 052° 37.880 E // D. Lat. 24° 15.458 N, Long. 052° 39.127 E



Shelter Area (SE of Sir Baniyas Island)