

Port Marine Notice

Port of: **Jebel Dhanna Ruwais**

No. JDR/MN/47/2024

Date: 30.11.2024

To : **All Shipping
Shipping Agents
Port Users
Port Operators**

Type of Change: **Temporary**

Subject : Ruwais ADNOC LNG Growth Project – Environmental Monitoring and Marker Buoys

Please be advised that the environmental monitoring and monitoring buoys are been deployed at the below locations as part of the subject project.

Appended Chart with table of the buoys with co-ordinates, for your kind reference.

Caution :

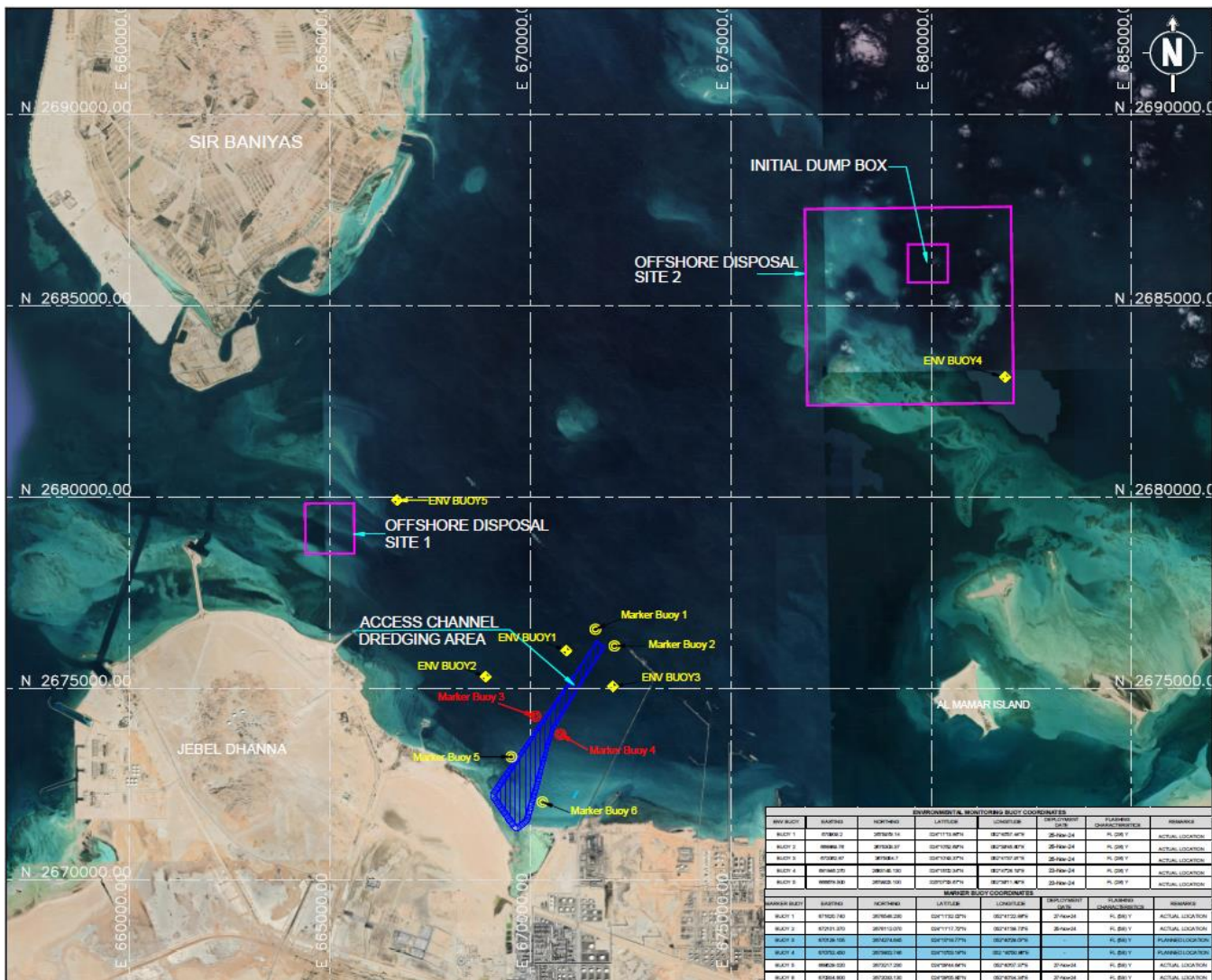
- Mariners are advised to exercise extra caution due to dredging works and navigate at safe speed while transiting through dredging area and near vicinity:
- All vessels/crafts to proceed with minimum safe speed and navigate with extra caution, especially during dark hours.
- Maintain constant listening watch on Ch 21/09
- All movements should be coordinated with Port Control/VTIS

Any clarification related to this Port Marine Notice, may be directed to the Harbor Master using Contact us form on PPA website <https://ppa.adnoc.ae/en/contact-us>

Harbour Master

Port of : Jebel Dhanna Ruwais





ENVIRONMENTAL MONITORING BUOY COORDINATES							
ENV BUOY	EASTING	NORTHING	LATITUDE	LONGITUDE	DEPLOYMENT DATE	FLASHING CHARACTERISTICS	REMARKS
BUOY 1	670909.2	2675679.14	024°11'13.86"N	052°40'57.44"E	25-Nov-24	FL (2S) Y	ACTUAL LOCATION
BUOY 2	668889.76	2675303.37	024°10'52.69"N	052°39'45.60"E	25-Nov-24	FL (2S) Y	ACTUAL LOCATION
BUOY 3	672062.87	2675054.7	024°10'43.37"N	052°41'37.91"E	25-Nov-24	FL (2S) Y	ACTUAL LOCATION
BUOY 4	681846.270	2683145.130	024°15'02.34"N	052°47'28.19"E	23-Nov-24	FL (2S) Y	ACTUAL LOCATION
BUOY 5	666678.500	2679923.100	025°07'33.67"N	052°39'11.89"E	23-Nov-24	FL (2S) Y	ACTUAL LOCATION
MARKER BUOY COORDINATES							
MARKER BUOY	EASTING	NORTHING	LATITUDE	LONGITUDE	DEPLOYMENT DATE	FLASHING CHARACTERISTICS	REMARKS
BUOY 1	671620.740	2676546.230	024°11'32.02"N	052°41'22.89"E	27-Nov-24	FL (5S) Y	ACTUAL LOCATION
BUOY 2	672101.370	2676112.070	024°11'17.72"N	052°41'39.73"E	25-Nov-24	FL (5S) Y	ACTUAL LOCATION
BUOY 3	670129.105	2674274.645	024°10'18.77"N	052°40'29.07"E	-	FL (5S) Y	PLANNED LOCATION
BUOY 4	670752.450	2673802.746	024°10'03.19"N	052°40'50.96"E	-	FL (5S) Y	PLANNED LOCATION
BUOY 5	669529.020	2673217.230	024°09'44.64"N	052°40'07.37"E	27-Nov-24	FL (5S) Y	ACTUAL LOCATION
BUOY 6	670304.600	2672033.130	024°09'05.85"N	052°40'34.34"E	27-Nov-24	FL (5S) Y	ACTUAL LOCATION